

WESTLEIGH PARK SPORTS PRECINCT

DEVELOPMENT APPLICATION - CIVIL WORKS

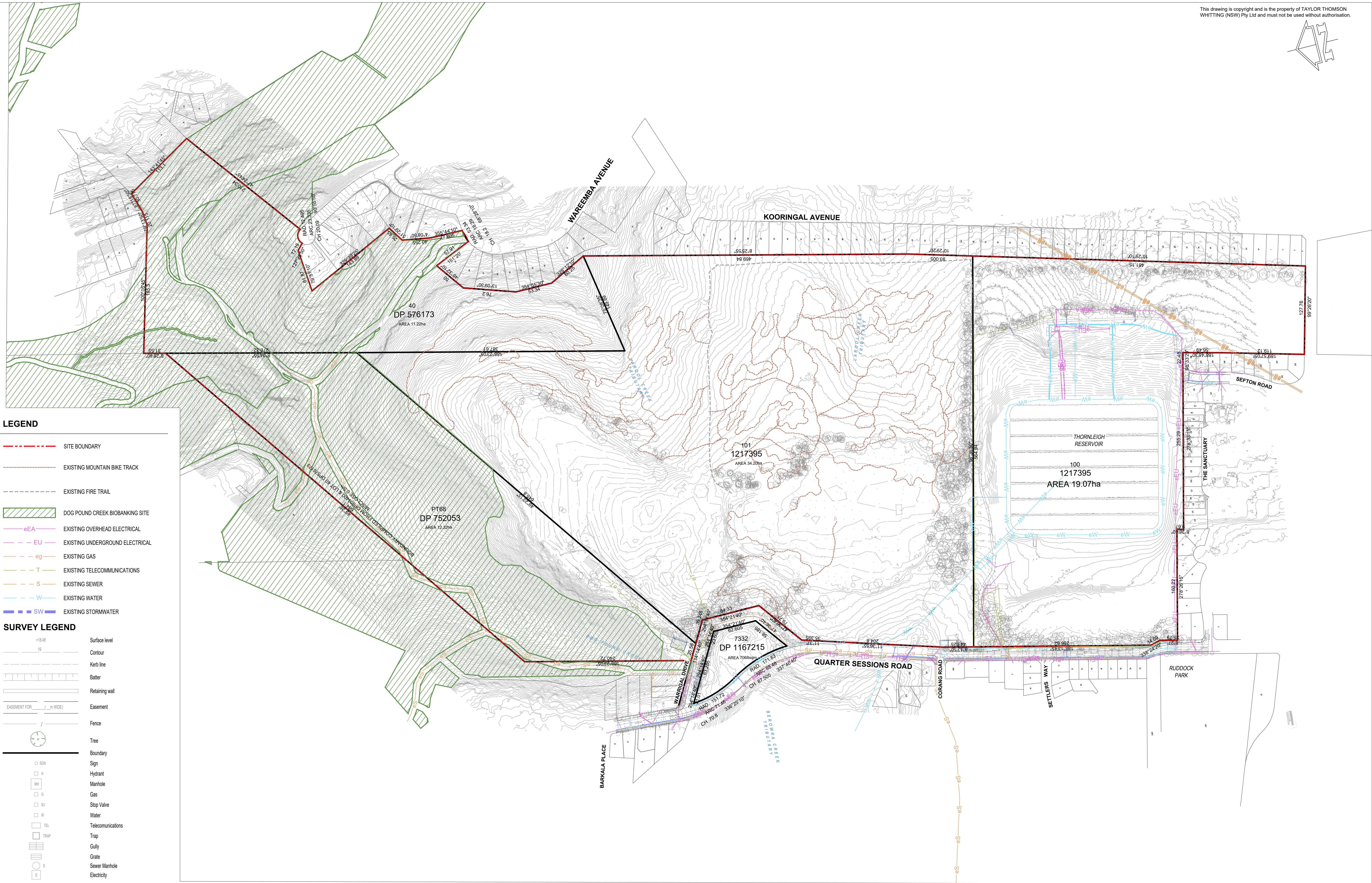
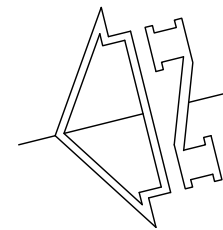


SPORTS PRECINCT CONCEPT VIEW
COURTESY OF ENVIRONMENTAL PARTNERSHIP

DRAWING SCHEDULE

DWG NO:	DWG TITLE:		
C000	COVER SHEET	C071	STORMWATER MANAGEMENT PLAN 1
C001	NOTES AND LEGEND SHEET	C072	STORMWATER MANAGEMENT PLAN 2
C010	EXISTING SITE PLAN	C075	STORMWATER CATCHMENT PLAN
C011	GENERAL ARRANGEMENT PLAN 1	C076	WATER QUALITY MANAGEMENT SCHEMATIC PLAN
C012	GENERAL ARRANGEMENT PLAN 2		
		C081	BULK EARTHWORKS PLAN
C013	GENERAL ARRANGEMENT DISTURBANCE PLAN	C091	DETAILS SHEET 1
C014	BIODIVERSITY ASSESSMENT DISTURBANCE PLAN	C092	DETAILS SHEET 2
C015	REMEDIATION ASSESSMENT DISTURBANCE PLAN	C093	DETAILS SHEET 3
C016	PROPOSED DEVELOPMENT ON SYDNEY WATER LAND	C094	DETAILS SHEET 4
C018	PROPOSED SITE PLAN	C095	DETAILS SHEET 5
		C096	DETAILS SHEET 6
		C097	DETAILS SHEET 7
		C098	DETAILS SHEET 8
C020	SITE DEMOLITION PLAN		
C021	SEDIMENT AND EROSION CONTROL PLAN	C100	OVERALL STAGING PLAN
C022	SEDIMENT AND EROSION CONTROL TYPICAL DETAILS	C101	STAGE 1A ARRANGEMENT PLAN
		C102	STAGE 1B ARRANGEMENT PLAN
C031	SITWORKS PLAN 1	C103	STAGE 2 ARRANGEMENT PLAN
C032	SITWORKS PLAN 2		
C033	SITWORKS PLAN 3		
C034	SITWORKS PLAN 4	C200	SCHEMATIC DESIGN VEHICLE ACCESS PLAN
C035	SITWORKS PLAN 5	C211	TURNING PATH PLAN SHEET 1
C036	SITWORKS PLAN 6	C212	TURNING PATH PLAN SHEET 2
		C213	TURNING PATH PLAN SHEET 3
C051	SITE SECTIONS SHEET 1	C214	TURNING PATH PLAN SHEET 4
C052	SITE SECTIONS SHEET 2		
C053	SITE SECTIONS SHEET 3		
C054	SITE SECTIONS SHEET 4	C301	SIGNAGE & LINEMARKING PLAN SHEET 1 OF 4
C055	SITE SECTIONS SHEET 5	C302	SIGNAGE & LINEMARKING PLAN SHEET 2 OF 4
C056	SITE SECTIONS SHEET 6	C303	SIGNAGE & LINEMARKING PLAN SHEET 3 OF 4
C057	SITE SECTIONS SHEET 7	C304	SIGNAGE & LINEMARKING PLAN SHEET 4 OF 4
C058	SITE SECTIONS SHEET 8		
C059	SOUTH FIELD RETAINING WALL ELEVATION		
C060	ROAD CONTROL ALIGNMENT PLAN		
C061	WESTLEIGH PARK ROAD LONGITUDINAL SECTION - SHEET 1		
C062	WESTLEIGH PARK ROAD LONGITUDINAL SECTION - SHEET 2		
C063	WESTLEIGH PARK ROAD LONGITUDINAL SECTION - SHEET 3		
C064	SEFTON ROAD LONGITUDINAL SECTION - SHEET 1		
C065	SEFTON ROAD LONGITUDINAL SECTION - SHEET 2		
C066	WESTLEIGH PARK ROAD CROSS SECTIONS - SHEET 1		
C067	WESTLEIGH PARK ROAD CROSS SECTIONS - SHEET 2		
C068	SEFTON ROAD CROSS SECTIONS - SHEET 1		
C069	SEFTON ROAD CROSS SECTIONS - SHEET 2		

File Name: C000.dwg - USER: admin - Plot File Created: Jul 02, 2024 - 3:42pm



- LEGEND**
- SITE BOUNDARY
 - EXISTING MOUNTAIN BIKE TRACK
 - EXISTING FIRE TRAIL
 - DOGPOND CREEK BIOBANKING SITE
 - eEA EXISTING OVERHEAD ELECTRICAL
 - EU EXISTING UNDERGROUND ELECTRICAL
 - eg EXISTING GAS
 - T EXISTING TELECOMMUNICATIONS
 - S EXISTING SEWER
 - W EXISTING WATER
 - SW EXISTING STORMWATER

- SURVEY LEGEND**
- +18.48 Surface level
 - 19 Contour
 - Kerb line
 - Batter
 - Retaining wall
 - EASEMENT FOR (m WIDE) Easement
 - Fence
 - Tree
 - Boundary
 - Sign
 - Hydrant
 - Manhole
 - Gas
 - Stop Valve
 - Water
 - Telecommunications
 - Trap
 - Gully
 - Grate
 - Sewer Manhole
 - Electricity
 - Electric Light Pole
 - Permanent Mark
 - Bench Mark



FOR APPROVAL
NOT TO BE USED FOR CONSTRUCTION

P6	FOR INFORMATION	DM	WW	15.06.24					
P5	FOR INFORMATION	DM	WW	01.05.24					
P4	FOR APPROVAL	DM	WW	01.09.23					
P3	FOR APPROVAL	DM	WW	11.05.23					
P2	FOR APPROVAL	DM	WW	08.07.22					
P1	75% CONCEPT ISSUE	DM	WW	25.06.21					
Rev	Description	Eng	Draft	Date	Rev	Description	Eng	Draft	Date

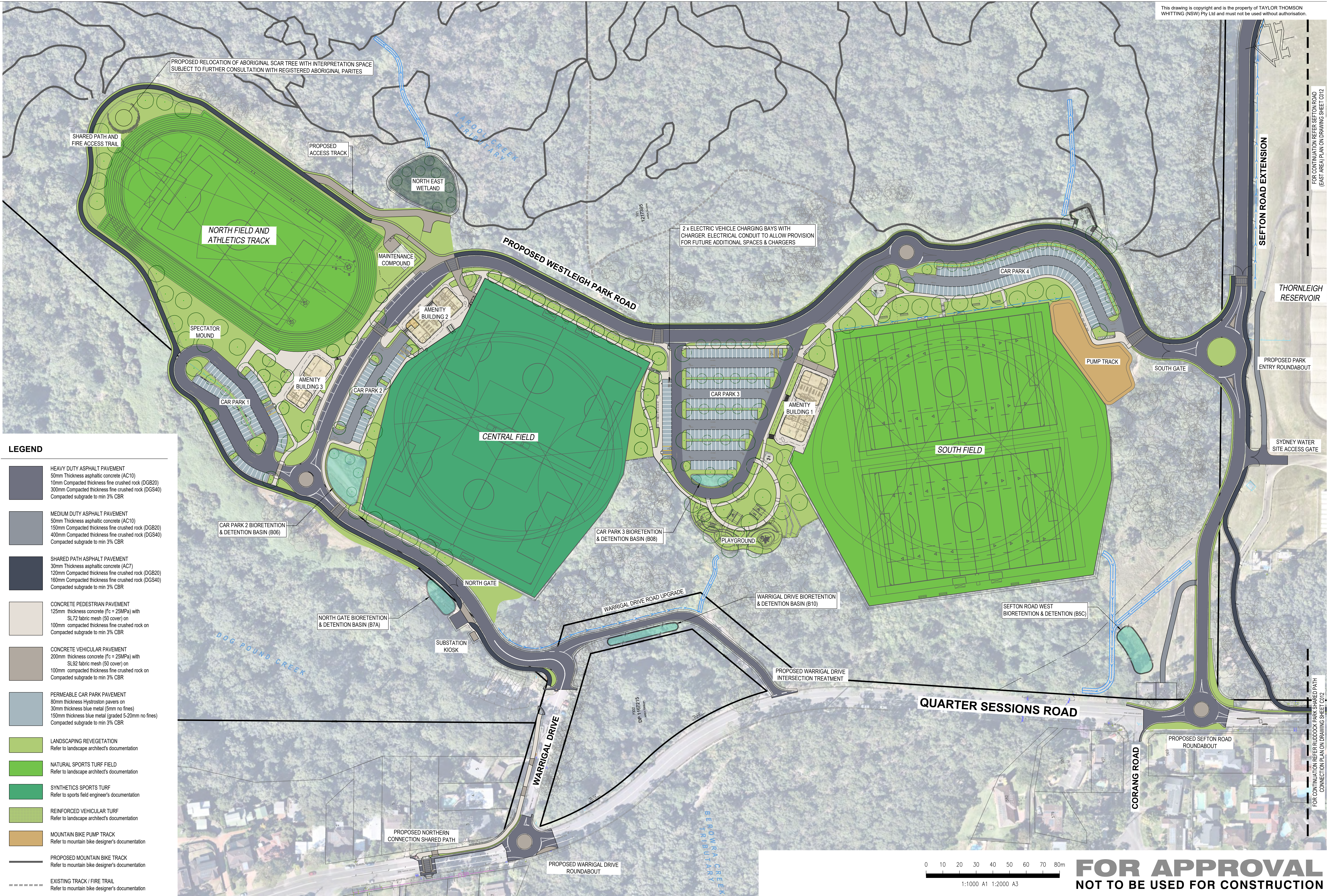
Architect
ENVIRONMENTAL PARTNERSHIP (NSW) Pty Ltd
22-36 MOUNTAIN STREET ULTIMO NSW 2007
Phone: (02) 9281 7007
Fax: (02) 9281 7666
www.epnsw.com.au

Civil Engineer
TTW **Structural Civil Traffic Façade**
612 9439 7288 | Level 6, 73 Miller Street, North Sydney, NSW 2060

Project
WESTLEIGH PARK, QUARTER SESSIONS ROAD, HORNSBY

Sheet Subject
EXISTING SITE PLAN

Scale : A1 1:2500	Drawn JH	Authorised TM
Job No 201537	Drawing No C010	Revision P8



LEGEND

- HEAVY DUTY ASPHALT PAVEMENT
50mm Thickness asphaltic concrete (AC10)
10mm Compacted thickness fine crushed rock (DGB20)
300mm Compacted thickness fine crushed rock (DGS40)
Compacted subgrade to min 3% CBR
- MEDIUM DUTY ASPHALT PAVEMENT
50mm Thickness asphaltic concrete (AC10)
150mm Compacted thickness fine crushed rock (DGB20)
400mm Compacted thickness fine crushed rock (DGS40)
Compacted subgrade to min 3% CBR
- SHARED PATH ASPHALT PAVEMENT
30mm Thickness asphaltic concrete (AC7)
120mm Compacted thickness fine crushed rock (DGB20)
160mm Compacted thickness fine crushed rock (DGS40)
Compacted subgrade to min 3% CBR
- CONCRETE PEDESTRIAN PAVEMENT
125mm thickness concrete (f_c = 25MPa) with
SL72 fabric mesh (50 cover) on
100mm compacted thickness fine crushed rock on
Compacted subgrade to min 3% CBR
- CONCRETE VEHICULAR PAVEMENT
200mm thickness concrete (f_c = 25MPa) with
SL92 fabric mesh (50 cover) on
100mm compacted thickness fine crushed rock on
Compacted subgrade to min 3% CBR
- PERMEABLE CAR PARK PAVEMENT
80mm thickness Hystron pavers on
30mm thickness blue metal (5mm no fines)
150mm thickness blue metal (graded 5-20mm no fines)
Compacted subgrade to min 3% CBR
- LANDSCAPING REVEGETATION
Refer to landscape architect's documentation
- NATURAL SPORTS TURF FIELD
Refer to landscape architect's documentation
- SYNTHETICS SPORTS TURF
Refer to sports field engineer's documentation
- REINFORCED VEHICULAR TURF
Refer to landscape architect's documentation
- MOUNTAIN BIKE PUMP TRACK
Refer to mountain bike designer's documentation
- PROPOSED MOUNTAIN BIKE TRACK
Refer to mountain bike designer's documentation
- EXISTING TRACK / FIRE TRAIL
Refer to mountain bike designer's documentation

P6	FOR APPROVAL	DM	KZ	26.05.23	P12	FOR APPROVAL	DM	WW	27.06.24
P5	FOR APPROVAL	DM	KZ	24.05.23	P11	FOR APPROVAL	DM	WW	15.09.23
P4	FOR APPROVAL	DM	WW	11.05.23	P10	FOR APPROVAL	DM	WW	14.09.23
P3	75% CONCEPT ISSUE	DM	WW	27.06.22	P9	FOR APPROVAL	DM	WW	01.09.23
P2	75% CONCEPT ISSUE	DM	WW	21.07.21	P8	FOR APPROVAL	DM	WW	19.08.23
P1	75% CONCEPT ISSUE	DM	WW	25.06.21	P7	FOR APPROVAL	DM	WW	21.07.23
Rev	Description	Eng	Draft	Date	Rev	Description	Eng	Draft	Date

Architect
**ENVIRONMENTAL PARTNERSHIP
(NSW) Pty Ltd**
22-36 MOUNTAIN STREET ULTIMO NSW 2007
Phone: (02) 9281 7007
Fax: (02) 9281 7666
www.epnsw.com.au

Civil Engineer
TTW **Structural
Civil
Traffic
Façade**
612 9439 7288 | Level 6, 73 Miller Street, North Sydney, NSW 2060

Project
**WESTLEIGH PARK,
QUARTER SESSIONS ROAD,
HORNSBY**

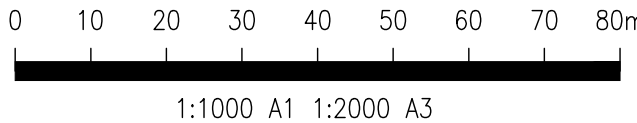
Sheet Subject
**GENERAL ARRANGEMENT
PLAN 1**

Scale : A1 1:1000	Drawn WW	Authorised TM
Job No 201537	Drawing No C011	Revision P12



LEGEND

- HEAVY DUTY ASPHALT PAVEMENT
50mm Thickness asphaltic concrete (AC10)
10mm Compacted thickness fine crushed rock (DGB20)
300mm Compacted thickness fine crushed rock (DGS40)
Compacted subgrade to min 3% CBR
- MEDIUM DUTY ASPHALT PAVEMENT
50mm Thickness asphaltic concrete (AC10)
150mm Compacted thickness fine crushed rock (DGB20)
400mm Compacted thickness fine crushed rock (DGS40)
Compacted subgrade to min 3% CBR
- SHARED PATH ASPHALT PAVEMENT
30mm Thickness asphaltic concrete (AC7)
120mm Compacted thickness fine crushed rock (DGB20)
160mm Compacted thickness fine crushed rock (DGS40)
Compacted subgrade to min 3% CBR
- CONCRETE PEDESTRIAN PAVEMENT
125mm thickness concrete (f_c = 25MPa) with
SL72 fabric mesh (50 cover) on
100mm compacted thickness fine crushed rock on
Compacted subgrade to min 3% CBR
- CONCRETE VEHICULAR PAVEMENT
200mm thickness concrete (f_c = 25MPa) with
SL92 fabric mesh (50 cover) on
100mm compacted thickness fine crushed rock on
Compacted subgrade to min 3% CBR
- PERMEABLE CAR PARK PAVEMENT
80mm thickness Hystroston pavers on
30mm thickness blue metal (5mm no fines)
150mm thickness blue metal (graded 5-20mm no fines)
Compacted subgrade to min 3% CBR
- LANDSCAPING REVEGETATION
Refer to landscape architect's documentation
- NATURAL SPORTS TURF FIELD
Refer to landscape architect's documentation
- SYNTHETICS SPORTS TURF
Refer to sports field engineer's documentation
- REINFORCED VEHICULAR TURF
Refer to landscape architect's documentation
- MOUNTAIN BIKE PUMP TRACK
Refer to mountain bike designer's documentation
- PROPOSED MOUNTAIN BIKE TRACK
Refer to mountain bike designer's documentation
- EXISTING TRACK / FIRE TRAIL
Refer to mountain bike designer's documentation



FOR APPROVAL
NOT TO BE USED FOR CONSTRUCTION

P6	FOR APPROVAL	DM	WW	21.07.23					
P5	FOR APPROVAL	DM	KZ	26.05.23					
P4	FOR APPROVAL	DM	KZ	24.05.23					
P3	FOR APPROVAL	DM	WW	08.07.22	P9	FOR APPROVAL	DM	WW	27.06.24
P2	75% CONCEPT ISSUE	DM	WW	21.07.21	P8	FOR APPROVAL	DM	WW	15.09.23
P1	75% CONCEPT ISSUE	DM	WW	25.06.21	P7	FOR APPROVAL	DM	WW	18.08.23
Rev	Description	Eng	Draft	Date	Rev	Description	Eng	Draft	Date

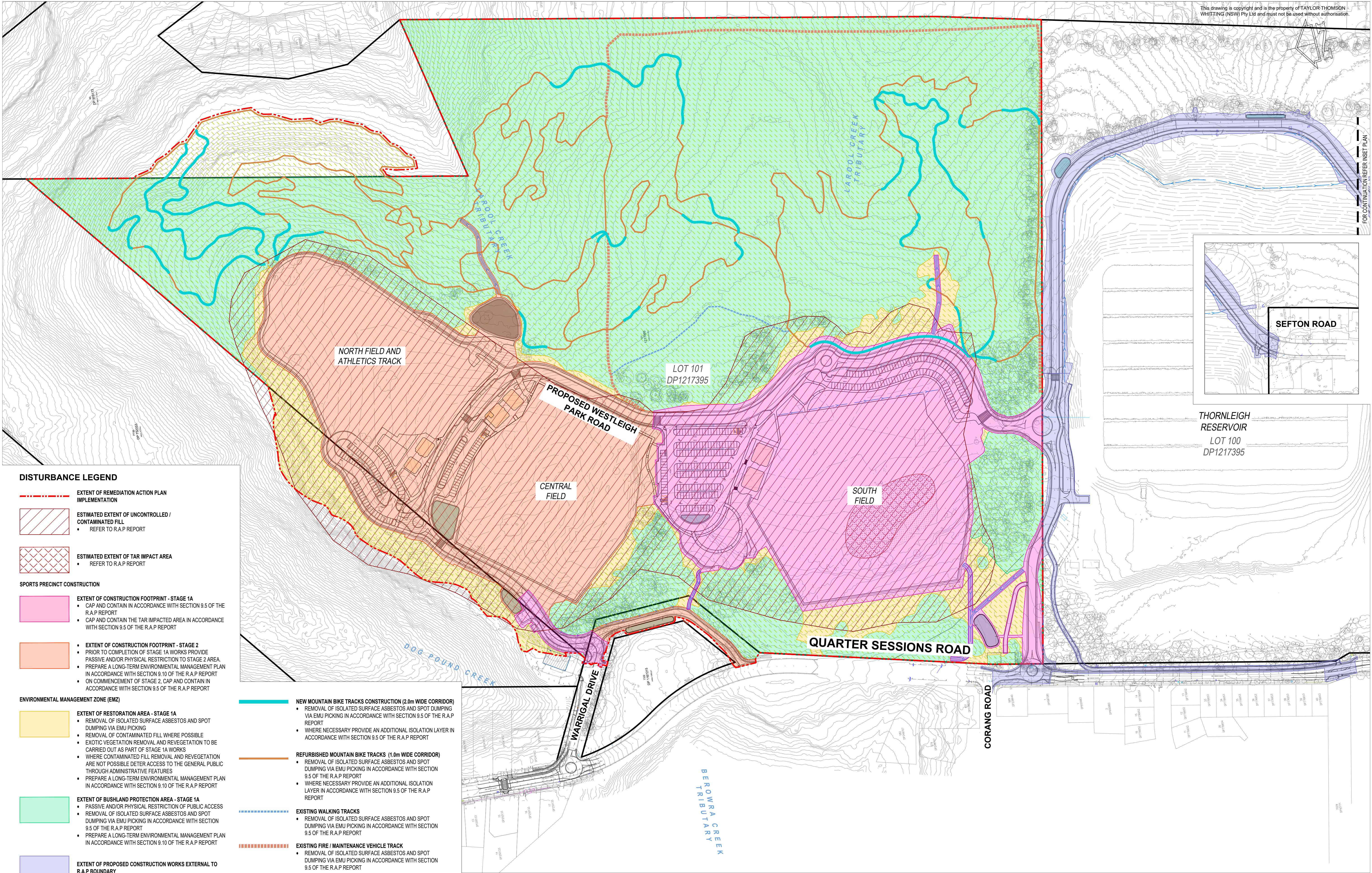
Architect
**ENVIRONMENTAL PARTNERSHIP
(NSW) Pty Ltd**
22-36 MOUNTAIN STREET ULTIMO NSW 2007
Phone: (02) 9281 7007
Fax: (02) 9281 7666
www.epnsw.com.au

Civil Engineer
TTW **Structural
Civil
Traffic
Façade**
612 9439 7288 | Level 6, 73 Miller Street, North Sydney, NSW 2060

Project
**WESTLEIGH PARK,
QUARTER SESSIONS ROAD,
HORNSBY**

Sheet Subject
**GENERAL ARRANGEMENT
PLAN 2**

Scale : A1 1:1000	Drawn WW	Authorised TM
Job No 201537	Drawing No C012	Revision P9



DISTURBANCE LEGEND

EXTENT OF REMEDIATION ACTION PLAN IMPLEMENTATION

ESTIMATED EXTENT OF UNCONTROLLED / CONTAMINATED FILL
• REFER TO R.A.P REPORT

ESTIMATED EXTENT OF TAR IMPACT AREA
• REFER TO R.A.P REPORT

SPORTS PRECINCT CONSTRUCTION

EXTENT OF CONSTRUCTION FOOTPRINT - STAGE 1A
• CAP AND CONTAIN IN ACCORDANCE WITH SECTION 9.5 OF THE R.A.P REPORT
• CAP AND CONTAIN THE TAR IMPACTED AREA IN ACCORDANCE WITH SECTION 9.5 OF THE R.A.P REPORT

• EXTENT OF CONSTRUCTION FOOTPRINT - STAGE 2
• PRIOR TO COMPLETION OF STAGE 1A WORKS PROVIDE PASSIVE AND/OR PHYSICAL RESTRICTION TO STAGE 2 AREA
• PREPARE A LONG-TERM ENVIRONMENTAL MANAGEMENT PLAN IN ACCORDANCE WITH SECTION 9.10 OF THE R.A.P REPORT
• ON COMMENCEMENT OF STAGE 2, CAP AND CONTAIN IN ACCORDANCE WITH SECTION 9.5 OF THE R.A.P REPORT

ENVIRONMENTAL MANAGEMENT ZONE (EMZ)

EXTENT OF RESTORATION AREA - STAGE 1A
• REMOVAL OF ISOLATED SURFACE ASBESTOS AND SPOT DUMPING VIA EMU PICKING
• REMOVAL OF CONTAMINATED FILL WHERE POSSIBLE
• EXOTIC VEGETATION REMOVAL AND REVEGETATION TO BE CARRIED OUT AS PART OF STAGE 1A WORKS
• WHERE CONTAMINATED FILL REMOVAL AND REVEGETATION ARE NOT POSSIBLE DETER ACCESS TO THE GENERAL PUBLIC THROUGH ADMINISTRATIVE FEATURES
• PREPARE A LONG-TERM ENVIRONMENTAL MANAGEMENT PLAN IN ACCORDANCE WITH SECTION 9.10 OF THE R.A.P REPORT

EXTENT OF BUSHLAND PROTECTION AREA - STAGE 1A
• PASSIVE AND/OR PHYSICAL RESTRICTION OF PUBLIC ACCESS
• REMOVAL OF ISOLATED SURFACE ASBESTOS AND SPOT DUMPING VIA EMU PICKING IN ACCORDANCE WITH SECTION 9.5 OF THE R.A.P REPORT
• PREPARE A LONG-TERM ENVIRONMENTAL MANAGEMENT PLAN IN ACCORDANCE WITH SECTION 9.10 OF THE R.A.P REPORT

EXTENT OF PROPOSED CONSTRUCTION WORKS EXTERNAL TO R.A.P BOUNDARY

NEW MOUNTAIN BIKE TRACKS CONSTRUCTION (2.0m WIDE CORRIDOR)

- REMOVAL OF ISOLATED SURFACE ASBESTOS AND SPOT DUMPING VIA EMU PICKING IN ACCORDANCE WITH SECTION 9.5 OF THE R.A.P REPORT
- WHERE NECESSARY PROVIDE AN ADDITIONAL ISOLATION LAYER IN ACCORDANCE WITH SECTION 9.5 OF THE R.A.P REPORT

REFURBISHED MOUNTAIN BIKE TRACKS (1.0m WIDE CORRIDOR)

- REMOVAL OF ISOLATED SURFACE ASBESTOS AND SPOT DUMPING VIA EMU PICKING IN ACCORDANCE WITH SECTION 9.5 OF THE R.A.P REPORT
- WHERE NECESSARY PROVIDE AN ADDITIONAL ISOLATION LAYER IN ACCORDANCE WITH SECTION 9.5 OF THE R.A.P REPORT

EXISTING WALKING TRACKS

- REMOVAL OF ISOLATED SURFACE ASBESTOS AND SPOT DUMPING VIA EMU PICKING IN ACCORDANCE WITH SECTION 9.5 OF THE R.A.P REPORT

EXISTING FIRE / MAINTENANCE VEHICLE TRACK

- REMOVAL OF ISOLATED SURFACE ASBESTOS AND SPOT DUMPING VIA EMU PICKING IN ACCORDANCE WITH SECTION 9.5 OF THE R.A.P REPORT

NOTE
THIS DISTURBANCE PLAN HAS BEEN PREPARED FOR THE ASSESSMENT OF BOTH BIOHERISTY AND REMEDIATION IMPACTS

TO BE READ IN CONJUNCTION WITH FINAL REMEDIATION ACTION PLAN PREPARED BY TETRATECH COFFEY FOR DETAILED REMEDIATION STRATEGIES

P6	FOR ECOLOGICAL REVIEW	DM	WW	06.02.23	P12	FOR APPROVAL	DM	WW	28.07.23	P18	FOR APPROVAL	DM	WW	27.06.24
P5	FOR ECOLOGICAL REVIEW	DM	WW	02.11.22	P11	FOR APPROVAL	DM	KZ	26.05.23	P17	FOR APPROVAL	DM	WW	15.09.23
P4	FOR ECOLOGICAL REVIEW	DM	WW	18.10.22	P10	FOR APPROVAL	DM	KZ	24.05.23	P16	FOR APPROVAL	DM	WW	08.09.23
P3	FOR ECOLOGICAL REVIEW	DM	WW	10.10.22	P9	FOR ECOLOGICAL REVIEW	DM	WW	09.03.23	P15	FOR APPROVAL	DM	WW	01.09.23
P2	FOR APPROVAL	DM	WW	08.07.22	P8	FOR ECOLOGICAL REVIEW	DM	WW	07.03.23	P14	FOR APPROVAL	DM	WW	18.08.23
P1	75% CONCEPT ISSUE	DM	WW	25.06.21	P7	FOR ECOLOGICAL REVIEW	DM	WW	03.03.23	P13	FOR APPROVAL	DM	WW	04.08.23
Rev	Description	Eng	Draft	Date	Rev	Description	Eng	Draft	Date	Rev	Description	Eng	Draft	Date

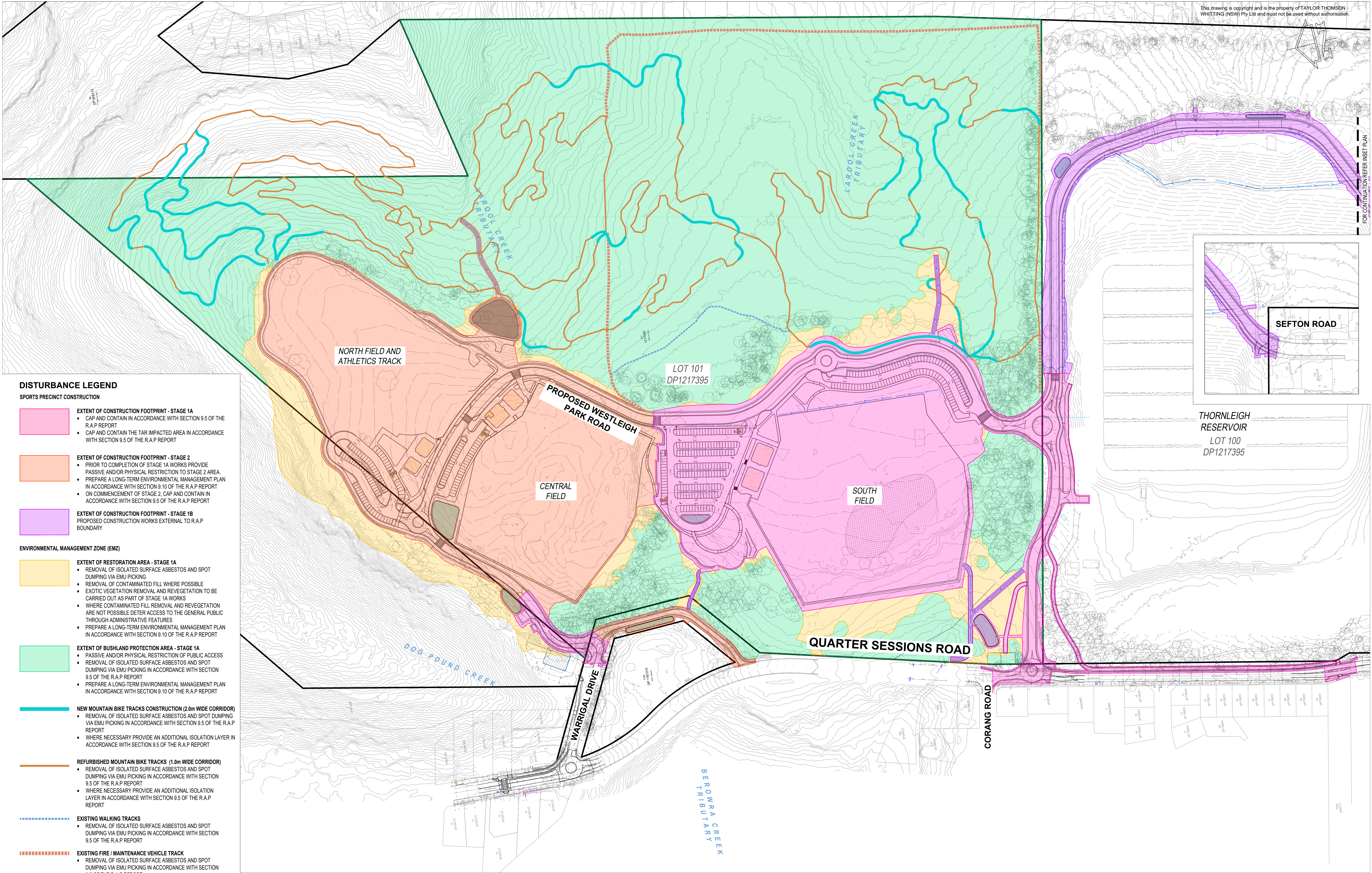
Architect
ENVIRONMENTAL PARTNERSHIP (NSW) Pty Ltd
22-36 MOUNTAIN STREET ULTIMO NSW 2007
Phone: (02) 9281 7007
Fax: (02) 9281 7866
www.epnsw.com.au

Civil Engineer
TTW **Structural Civil Traffic Façade**
612 9439 7288 | Level 6, 73 Miller Street, North Sydney, NSW 2060

Project
WESTLEIGH PARK, QUARTER SESSIONS ROAD, HORNSBY

Sheet Subject
GENERAL ARRANGEMENT DISTURBANCE PLAN

Scale : A1 1:1500	Drawn JH	Authorised TM
Job No 201537	Drawing No C013	Revision P18



DISTURBANCE LEGEND

SPORTS PRECINCT CONSTRUCTION

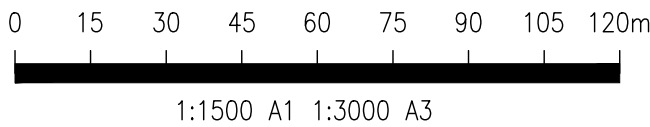
- EXTENT OF CONSTRUCTION FOOTPRINT - STAGE 1A**
 - CAP AND CONTAIN IN ACCORDANCE WITH SECTION 9.5 OF THE R.A.P REPORT
 - CAP AND CONTAIN THE TAR IMPACTED AREA IN ACCORDANCE WITH SECTION 9.5 OF THE R.A.P REPORT
- EXTENT OF CONSTRUCTION FOOTPRINT - STAGE 2**
 - PRIOR TO COMPLETION OF STAGE 1A WORKS PROVIDE PASSIVE AND/OR PHYSICAL RESTRICTION TO STAGE 2 AREA.
 - PREPARE A LONG-TERM ENVIRONMENTAL MANAGEMENT PLAN IN ACCORDANCE WITH SECTION 9.10 OF THE R.A.P REPORT
 - ON COMMENCEMENT OF STAGE 2, CAP AND CONTAIN IN ACCORDANCE WITH SECTION 9.5 OF THE R.A.P REPORT
- EXTENT OF CONSTRUCTION FOOTPRINT - STAGE 1B**
 - PROPOSED CONSTRUCTION WORKS EXTERNAL TO R.A.P BOUNDARY

ENVIRONMENTAL MANAGEMENT ZONE (EMZ)

- EXTENT OF RESTORATION AREA - STAGE 1A**
 - REMOVAL OF ISOLATED SURFACE ASBESTOS AND SPOT DUMPING VIA EMU PICKING
 - REMOVAL OF CONTAMINATED FILL WHERE POSSIBLE
 - EXOTIC VEGETATION REMOVAL AND REVEGETATION TO BE CARRIED OUT AS PART OF STAGE 1A WORKS
 - WHERE CONTAMINATED FILL REMOVAL AND REVEGETATION ARE NOT POSSIBLE DETER ACCESS TO THE GENERAL PUBLIC THROUGH ADMINISTRATIVE FEATURES
 - PREPARE A LONG-TERM ENVIRONMENTAL MANAGEMENT PLAN IN ACCORDANCE WITH SECTION 9.10 OF THE R.A.P REPORT
- EXTENT OF BUSHLAND PROTECTION AREA - STAGE 1A**
 - PASSIVE AND/OR PHYSICAL RESTRICTION OF PUBLIC ACCESS
 - REMOVAL OF ISOLATED SURFACE ASBESTOS AND SPOT DUMPING VIA EMU PICKING IN ACCORDANCE WITH SECTION 9.5 OF THE R.A.P REPORT
 - PREPARE A LONG-TERM ENVIRONMENTAL MANAGEMENT PLAN IN ACCORDANCE WITH SECTION 9.10 OF THE R.A.P REPORT
- NEW MOUNTAIN BIKE TRACKS CONSTRUCTION (2.0m WIDE CORRIDOR)**
 - REMOVAL OF ISOLATED SURFACE ASBESTOS AND SPOT DUMPING VIA EMU PICKING IN ACCORDANCE WITH SECTION 9.5 OF THE R.A.P REPORT
 - WHERE NECESSARY PROVIDE AN ADDITIONAL ISOLATION LAYER IN ACCORDANCE WITH SECTION 9.5 OF THE R.A.P REPORT
- REFURBISHED MOUNTAIN BIKE TRACKS (1.0m WIDE CORRIDOR)**
 - REMOVAL OF ISOLATED SURFACE ASBESTOS AND SPOT DUMPING VIA EMU PICKING IN ACCORDANCE WITH SECTION 9.5 OF THE R.A.P REPORT
 - WHERE NECESSARY PROVIDE AN ADDITIONAL ISOLATION LAYER IN ACCORDANCE WITH SECTION 9.5 OF THE R.A.P REPORT
- EXISTING WALKING TRACKS**
 - REMOVAL OF ISOLATED SURFACE ASBESTOS AND SPOT DUMPING VIA EMU PICKING IN ACCORDANCE WITH SECTION 9.5 OF THE R.A.P REPORT
- EXISTING FIRE / MAINTENANCE VEHICLE TRACK**
 - REMOVAL OF ISOLATED SURFACE ASBESTOS AND SPOT DUMPING VIA EMU PICKING IN ACCORDANCE WITH SECTION 9.5 OF THE R.A.P REPORT

TO BE READ IN CONJUNCTION WITH FINAL REMEDIATION ACTION PLAN PREPARED BY TETRATECH COFFEY FOR DETAILED REMEDIATION STRATEGIES

NOTE
THIS DISTURBANCE PLAN HAS BEEN PREPARED FOR THE ASSESSMENT OF
BIODIVERSITY IMPACTS



FOR APPROVAL
NOT TO BE USED FOR CONSTRUCTION

P6	FOR APPROVAL	DM	WW	04.06.24					
P5	FOR APPROVAL	DM	WW	30.05.24					
P4	FOR APPROVAL	DM	WW	15.09.23	P10	FOR APPROVAL	DM	WW	27.06.24
P3	FOR APPROVAL	DM	WW	08.09.23	P9	FOR APPROVAL	DM	WW	19.06.24
P2	FOR APPROVAL	DM	WW	01.09.23	P8	FOR APPROVAL	DM	WW	14.06.24
P1	FOR APPROVAL	DM	WW	18.08.23	P7	FOR APPROVAL	DM	WW	07.06.24
Rev	Description	Eng	Draft	Date	Rev	Description	Eng	Draft	Date

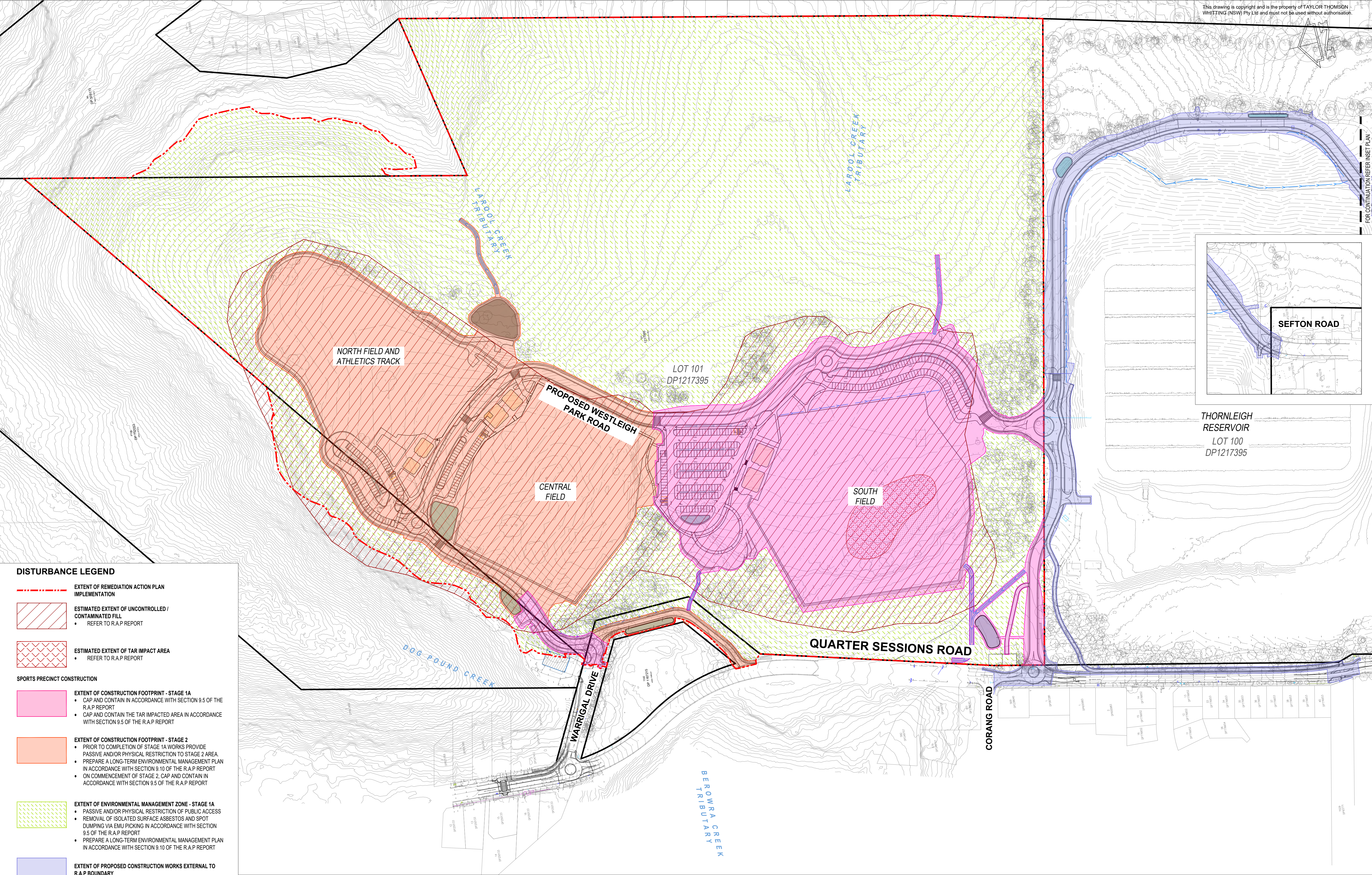
Architect
ENVIRONMENTAL PARTNERSHIP (NSW) Pty Ltd
22-36 MOUNTAIN STREET ULTIMO NSW 2007
Phone: (02) 9281 7007
Fax: (02) 9281 7866
www.epnsw.com.au

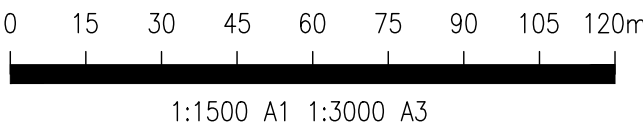
Civil Engineer
TTW **Structural Civil Traffic Façade**
612 9439 7288 | Level 6, 73 Miller Street, North Sydney, NSW 2060

Project
WESTLEIGH PARK, QUARTER SESSIONS ROAD, HORNSBY


Sheet Subject
BIODIVERSITY ASSESSMENT DISTURBANCE PLAN

Scale : A1 1:1500	Drawn JH	Authorised TM
Job No 201537	Drawing No C014	Revision P10





FOR APPROVAL
NOT TO BE USED FOR CONSTRUCTION

												Architect ENVIRONMENTAL PARTNERSHIP (NSW) Pty Ltd 22-36 MOUNTAIN STREET ULTIMO NSW 2007 Phone: (02) 9281 7007 Fax: (02) 9281 7666 www.epnsw.com.au						Civil Engineer  612 9439 7288 Level 6, 73 Miller Street, North Sydney, NSW 2060						Project WESTLEIGH PARK, QUARTER SESSIONS ROAD, HORNSBY						Sheet Subject PROPOSED DEVELOPMENT ON SYDNEY WATER LAND						Scale : A1 1:1500		Drawn JH		Authorised TM	
P4 FOR APPROVAL						DM		WW		27.06.24																				Job No 201537		Drawing No C016		Revision P4							
P3 FOR APPROVAL						DM		WW		08.09.23																															
P2 FOR INFORMATION						DM		WW		25.08.23																															
P1 FOR INFORMATION						DM		WW		18.08.23																															
Rev Description						Eng		Draft		Date		Rev Description						Eng		Draft		Date																			

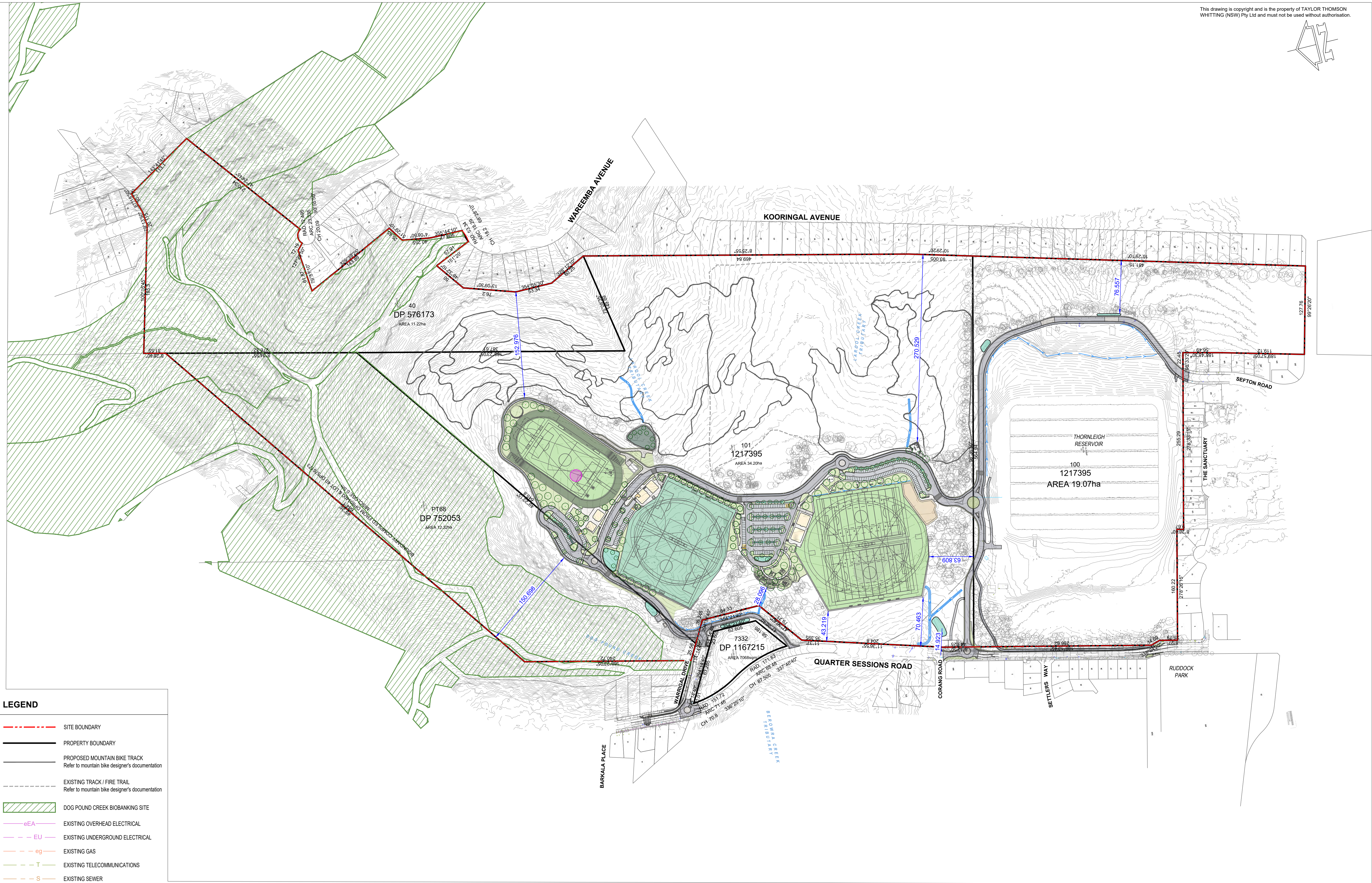
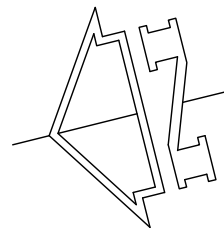
Architect
ENVIRONMENTAL PARTNERSHIP
(NSW) Pty Ltd
22-36 MOUNTAIN STREET ULTIMO NSW 2007
Phone: (02) 9281 7007
Fax: (02) 9281 7666
www.epnsw.com.au

Civil Engineer
TTW **Structural**
Civil
Traffic
Façade
612 9439 7288 | Level 6, 73 Miller Street, North Sydney, NSW 2060


Project
WESTLEIGH PARK,
QUARTER SESSIONS ROAD,
HORNSBY

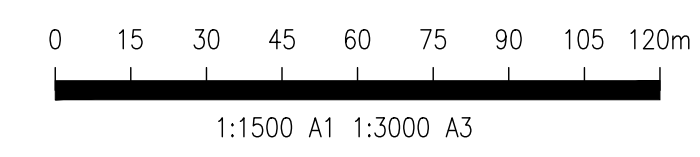
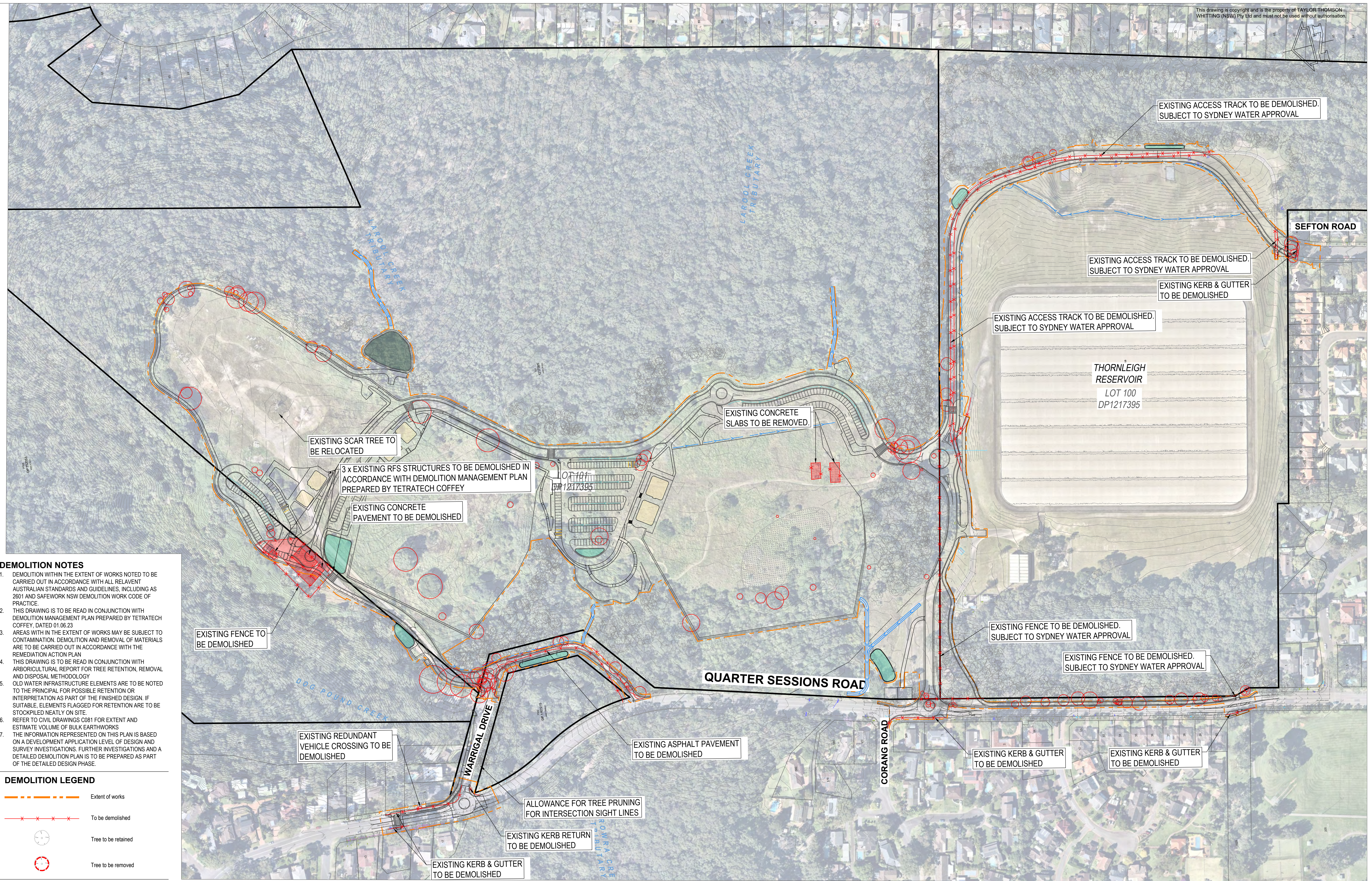
Sheet Subject
PROPOSED DEVELOPMENT ON
SYDNEY WATER LAND

Scale : A1
1:1500
Job No
201537
Drawing No
C016
Revision
P4




FOR APPROVAL
NOT TO BE USED FOR CONSTRUCTION

												Architect ENVIRONMENTAL PARTNERSHIP (NSW) Pty Ltd 22-36 MOUNTAIN STREET ULTIMO NSW 2007 Phone: (02) 9281 7007 Fax: (02) 9281 7666 www.epnsw.com.au						Civil Engineer  612 9439 7288 Level 6, 73 Miller Street, North Sydney, NSW 2060						Project WESTLEIGH PARK, QUARTER SESSIONS ROAD, HORNSBY						Sheet Subject PROPOSED SITE PLAN						Scale : A1 1:2500		Drawn JH		Authorised TM	
P4 FOR APPROVAL						DM		VW		01.07.24																										Job No 201537		Drawing No C018		Revision P4	
P3 FOR APPROVAL						DM		VW		27.06.24																															
P2 FOR INFORMATION						DM		VW		15.06.24																															
P1 FOR INFORMATION						DM		VW		01.05.24																															
Rev Description						Eng		Draft		Date		Rev Description						Eng		Draft		Date																			



FOR APPROVAL
NOT TO BE USED FOR CONSTRUCTION

										Architect ENVIRONMENTAL PARTNERSHIP (NSW) Pty Ltd 22-36 MOUNTAIN STREET ULTIMO NSW 2007 Phone: (02) 9281 7007 Fax: (02) 9281 7666 www.epnsw.com.au										Civil Engineer  Project WESTLEIGH PARK, QUARTER SESSIONS ROAD, HORNSBY 612 9439 7288 Level 6, 73 Miller Street, North Sydney, NSW 2060										Sheet Subject SITE DEMOLITION PLAN										Scale : A1 1:1500										Drawn WW										Authorised TM																			
P3 FOR APPROVAL DM WW 28.06.24																																																																															
P2 FOR APPROVAL DM WW 15.06.24																																																																															
P1 FOR APPROVAL DM WW 08.09.23																																																																															
Rev Description Eng Draft Date										Rev Description Eng Draft Date																																																																					